



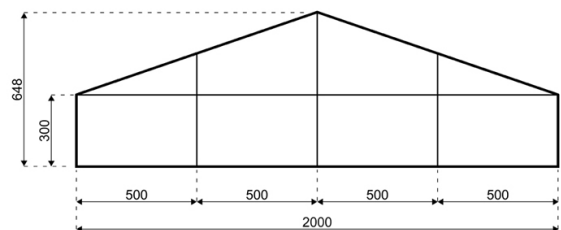
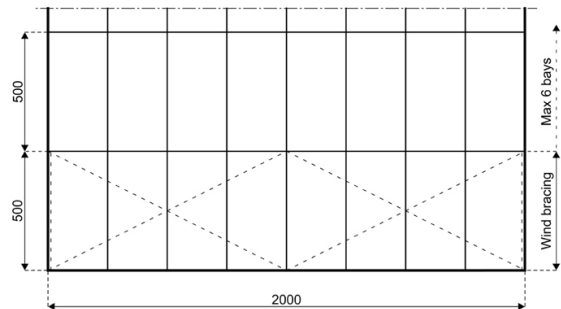
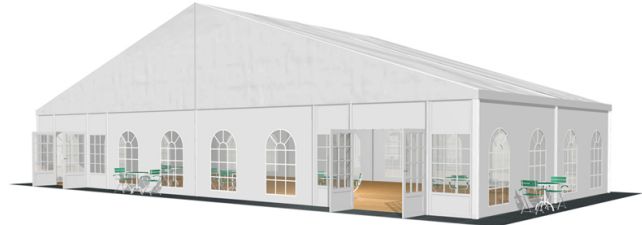
Compatible Structure Systems

Paris Large Event Design

PAR-2000/300/648

SPECIFICATIONS

- Span width:
20.00m
- Eave Height:
3.00m
- Ridge Height:
6.48m
- Peak height:
Field Not Applicable
- Bay distance:
5.00m
- Roof pitch:
18°
- Number of gable uprights:
3 Gable uprights (per end)
- Longest component (m):
10.66m
- Minimum length:
20.00m
- Maximum length:
Unlimited in 5.00 m increments
- Snow loading compliance:
Field Not Applicable
- Max allowed wind speed to Norm DIN EN 13782:
102 km/h (0.50kN/m²)
- Main profile size:
210/110/3mm
- Eave connection type:
Aluminium connection with locking pins
- Aluminium type:
European - Hard Pressed Extruded Structural Aluminium
- Connecting components:
European - hot dipped, structural grade corrosive resistant galvanised steel
- Textile roof and wall covering:
Premium grade, high gloss white, PVC coated polyester fabric - UV resistant and flame retardant according to: DIN 4102 B1, M2; BS 5438/7837; USA NFPA701.



ACCESSORIES AVAILABLE

- ▶ ABS Solid Wall
- ▶ ABS Transportation Storage Rack
- ▶ Aluminium Cassette Flooring with Ply Boards
- ▶ Clear Poly-glass Roof
- ▶ Cover Transportation Storage Rack
- ▶ Door Transportation Storage Rack
- ▶ Double Entrance/Exit Door
- ▶ External / Internal Entrance Ramp
- ▶ External & Internal Lighting
- ▶ Frame Transportation Storage Rack
- ▶ Georgian Poly-glass Window Walls
- ▶ Glass / ISO Walling Transportation Storage Rack



HEAD OFFICE AND PRODUCTION
Röder HTS Höcker GmbH
Hinter der Schlagmühle 1
Kefenrod, D-63699
Germany

Telephone: +49 (0) 60 49 95 100
Fax: +49 (0) 60 49 95 1020
Email: sales@roderhts.com
Web: www.roderhts.com

REPRESENTED WORLDWIDE IN:

Australia
Austria
Bosnia
Bulgaria

Central America
Croatia
France
Germany

Great Britain
Greece
Romania
India
Ireland
Italy

Middle Asia
Middle East
Netherlands
North America
Poland
Russia

Scandinavia
Singapore
Slovenia
South Africa
South America
Spain
Switzerland